

VANNE MAV 1.50



Order No. V3071 • NPT
Order No. V3071BSPT • BSPT

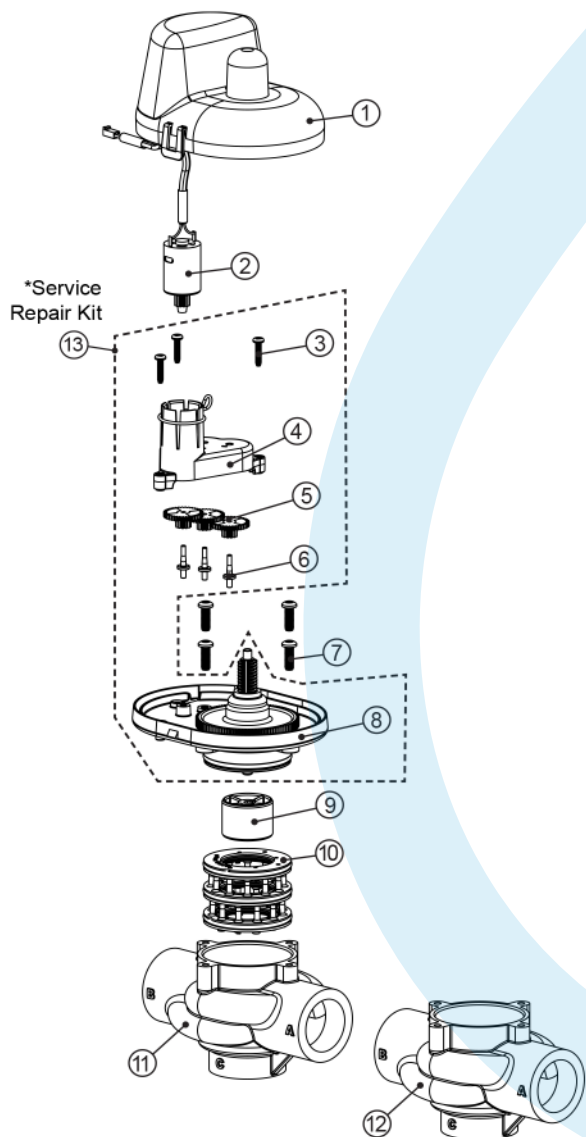
- **1.5" NPT or 1.5" BSPT Available**
- **Epoxy coated lead free brass valve body***
- **Allows for two WS1.5 Valves to be a Twin Alternating System**
- **Full 1.5" ports with minimal pressure loss**
- **Provides for no raw water bypass during regeneration**
- **Provides choices of treated or non-treated water regeneration**
- **Proven and reliable Clack DC drive assembly**
- **Low voltage drive assembly controlled by valve's circuit board**
- **Flow from Port A to Common has a 3.74 PSI drop at 60 GPM**
- **Flow from Port B to Common has a 2.15 PSI drop at 60 GPM**
- **Hydraulically Balanced Piston Valve**
- **Patented Seal/Spacer Stack Assembly**
- **Operating Pressures:**
20 PSI Minimum
125 PSI Maximum
- **Operating Temperatures:**
40°F Minimum
110°F Maximum



EXAMPLE OF A TWIN CONFIGURATION

**Order No. V3071 • Description: MOTOR ALT VLV 1.5 NPT REV2 or
Order No. V3071BSPT • Description: MOTOR ALT VLV 1.5 BSPT REV2**

| Drawing No. | Order No. | Description | Quantity | |
|-------------|--------------|--------------------------------------|----------|-----------|
| | | | V3071 | V3071BSPT |
| 1 | V3073 | MAV/NOHWBY COVER ASY | 1 | 1 |
| 2 | V3476 | WS MOTOR ASY 8 FT | 1 | 1 |
| 3 | V3592 | SCREW #8-3/4 PHPN T-25 SS | 3 | 3 |
| 4 | V3262-01 | WS1.5&2ALT/2BY REDUCGEARCVRAS | 1 | 1 |
| 5 | V3110-01 | WS1 DRIVE REDUCING GEAR PLAIN | 3 | 3 |
| 6 | V3264 | WS2 BYPASS REDUCTION GEAR AXLE | 3 | 3 |
| 7 | V3527 | SCREW 1/4-20 X 3/4 BHSCS SS | 4 | 4 |
| 8 | V3072 | MAV/NOHWBY 1/125/15 DRIVE ASY | 1 | 1 |
| 9 | V3506-01 | MAV/NOHRD 1/125/15 PISTON | 1 | 1 |
| 10 | V3074 | MAV/NOHWBY 1/125/15 STACK ASY | 1 | 1 |
| 11 | V3525-01 | MAV BODY 1.5 NPT | 1 | N/A |
| 12 | V3525BSPT-01 | MAV BODY 1.5 BSPT | N/A | 1 |
| Not Shown | V3474 | WS ALT CONNECT CORD 8FT BLK | 1 | 1 |
| *13 | V3042 | WS1/1.25/1.5 MAV & NHWB SERVICE PACK | | |



•Operating Pressures:
20 PSI Minimum / 125 PSI Maximum
•Operating Temperatures:
40°F Minimum / 110°F Maximum

