

Polyethylene tanks

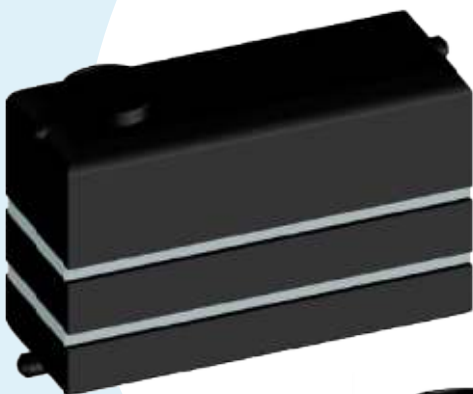
Water storage at atmospheric pressure



STOCKAGE

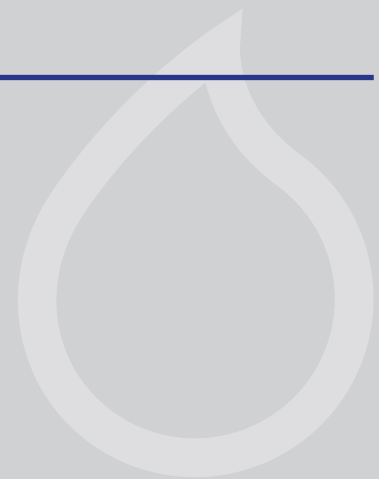
HIGH DENSITY POLYETHYLENE TANKS

- These tanks are rectangular, black, with steel binding bands.
- Delivered standard with manhole, 1 tapping of sampling R2" in the lower part and two float level contactors.
- ¾" to 2" other inlets or flanged DN 40 to DN 100 are done on request.
- Event filter and overflow protected by hydraulic clearance on request.



APPLICATIONS

Water storage at atmospheric pressure.



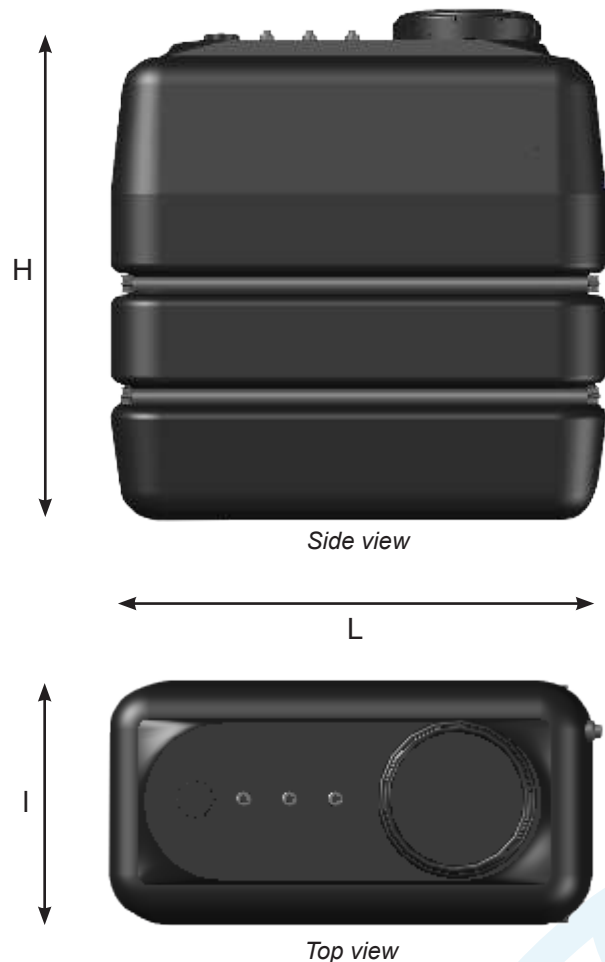
Polyethylene tanks

TECHNICAL CHARACTERISTICS

Reference	Volume (L)	Binding bands	Weight (kg)	L x l x H (mm)	Basic facilities
W1000N-A	1000 L	2	55	1400 x 720 x 1400	Man hole (ø 400 mm) Low output 1,5" - 2 levels
W1500N	1500 L	3	70	1560 x 720 x 1640	Man hole (ø 400 mm) Low output 1,5" - 2 levels
W2000N	2000 L	3	110	2070 x 720 x 1690	Man hole (ø 400 mm) Low output 1,5" - 2 levels
W2500N	2500 L	3	115	1870 x 995 x 1650	Man hole (ø 400 mm) Low output 1,5" - 2 levels
W3000N	3000 L	3	165	2230 x 995 x 1650	Man hole (ø 400 mm) Low output 2" - 2 levels
W4000N	4000 L	4	235	2430 x 995 x 1950	Man hole (ø 400 mm) Low output DN80 - 2 levels

RECOMMANDATIONS

- Atmospheric pressure.
- Temperature $\leq 40^{\circ}\text{C}$
- These tanks should be protected from sunlight.
- The storage of products with a density higher than 1.2 requires strengthened binding bands.
- Before the installation, make sure that the concrete ground surface is flat and smooth in order to avoid perforating the tanks.



ADH2OC INDUSTRIAL
Headquarters
 3, Rue Kercoz
 22 220 TRÉGUIER - FRANCE
 Tel +33 (0)2 96 40 02 50
 Fax +33 (0)2 22 44 98 48
www.adh2oc-industrial.com

Workshop
 Lieudit «La Vallée Drouard»
 28500 CHÉRISY - FRANCE
 Tel +33 (0)2 37 50 20 79
 Fax +33 (0)2 22 44 98 48
 e-mail : infos@adh2oc-industrial.com