

Sludge Removal Filter with Magnetic Rods

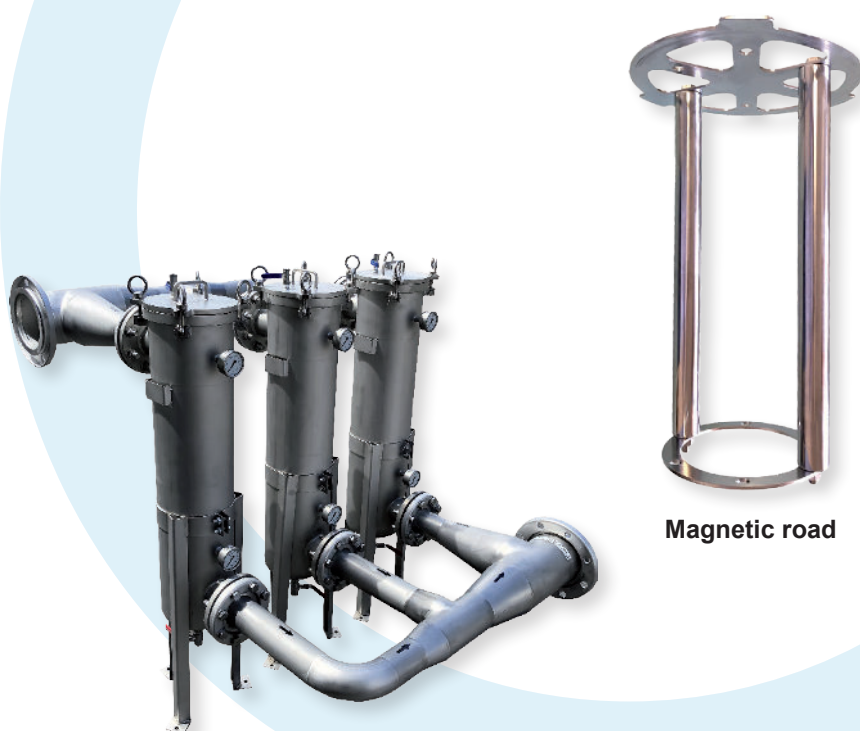
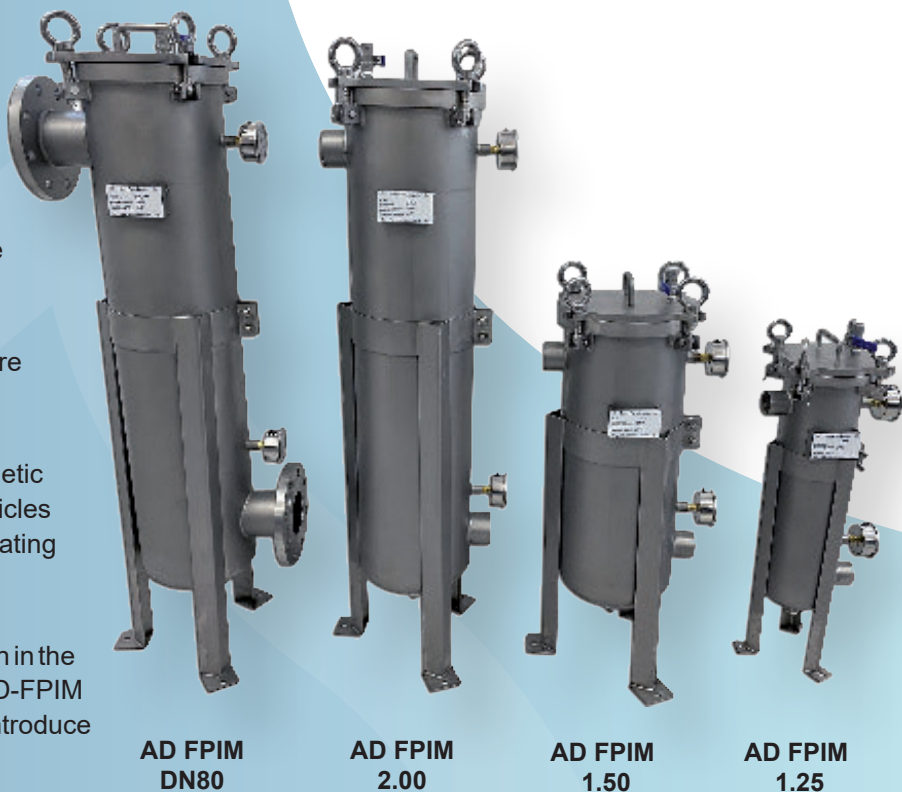
AD-FPIM



FILTRATION

SLUDGE REMOVAL FILTER WITH MAGNETIC RODS

- The closed water recirculating systems tend to produce sludge and metallic particles which affect the efficiency of the installations, they slow down the fluid circulation, damage prematurely the pumps and clog the exchangers. The AD-FPIM with their magnetic field are the right solution to this problem.
- The particles larger than 50 microns are withheld by the filter bag.
- The magnetic rods create a powerful magnetic field which traps all the ferrous particles produced by the closed water recirculating installation.
- Since their installation represents a derivation in the closed water recirculating systems, the AD-FPIM sludge removal filters are also used to introduce conditioning products into the loop.



Assembly in parallel

Magnetic road

APPLICATIONS

The AD-FPIM sludge removal filters were designed for the water treatment of the closed water recirculating installations :

- Heating circuits
- Cooling circuits
- Chilled water circuits

Sludge removal filter with magnetic rods

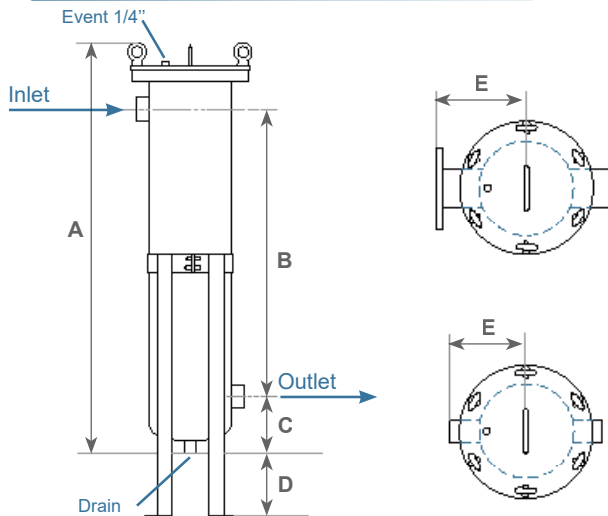


Ref.	Inlet / Outlet	Nominal flow rate	Max. flow rate	Empty weight	Number and length of magnetic rods
AD-FPIM 1.25	1 1/4"	5 m³/h	10 m³/h	12 kg	1 - 300 mm
AD-FPIM 1.50	1 1/2"	11 m³/h	18 m³/h	27 kg	2 - 300 mm
AD-FPIM 2.00	2"	18 m³/h	30 m³/h	30 kg	2 - 600 mm
AD-FPIM DN80	Bride 3"	30 m³/h	50 m³/h	36 kg	3 - 600 mm

Maximum pressure : 10 Bar - Maximum temperature : 100°C
Vent port : 1/4"

Drain connection 1/2" for AD-FPIM 1.25 and 3/4" for the others

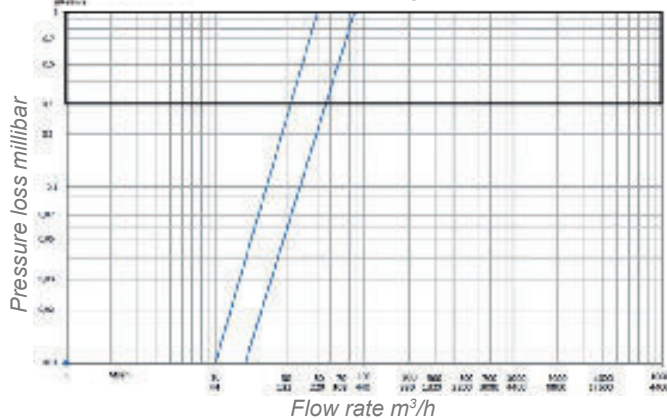
HOUSING FOOTPRINT mm



Ref.	A (mm)	B (mm)	C (mm)	D (mm)	E (mm)	Weight (kg)
AD-FPIM 1.25	590	355	95	225	100	12
AD-FPIM 1.50	680	370	150	205	147	27
AD-FPIM 2.0	1040	720	150	410	142	35
AD-FPIM DN80	1060	700	170	430	200	45

PRESSURE LOSS

With standard 50 µ clean filter bag - Water 20 °C

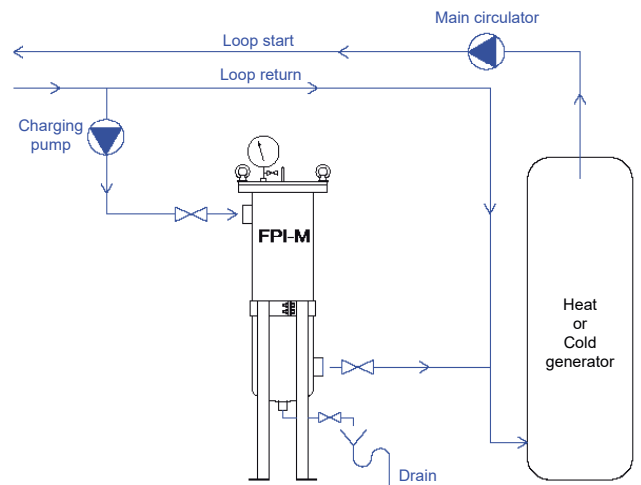


ADH2OC INDUSTRIAL
Headquarters
3, Rue Kercoz
22 220 TRÉGUIER - FRANCE
Tel +33 (0)2 96 40 02 50
Fax +33 (0)2 22 44 98 48
www.adh2oc-industrial.com

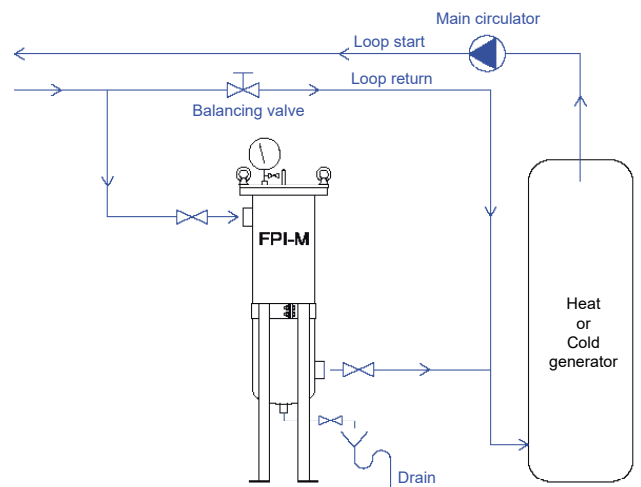
TECHNICAL CHARACTERISTICS

- 100% Stainless Steel construction.
- EPDM O-ring seal.
- Side inlet and outlet piping connections with height adjustable mounting legs for an easy connection to the network.
- Bottom drain connection for a total drainage.
- Closure of the cover with swing bolts.
- Stainless Steel support basket to maintain the filter bag.
- Delivered with a glycerin filled gauge and a vent valve.
- Magnetic system.
- The magnetic field removes all the suspended ferrous particles from the recirculation loop.

INSTALLATION DIAGRAM



With charging pump connected to the inlet



With balancing valve on the main circuit

Workshop
Lieudit «La Vallée Drouard»
28500 CHÉRISY - FRANCE
Tel +33 (0)2 37 50 20 79
Fax +33 (0)2 22 44 98 48
e-mail : infos@adh2oc-industrial.com